



State of New Jersey

DEPARTMENT OF ENVIRONMENTAL PROTECTION

Bureau of Nonpoint Pollution Control
Division of Water Quality
401-02B

Post Office Box 420
Trenton, New Jersey 08625-0420
609-633-7021 Fax: 609-777-0432

http://www.state.nj.us/dep/dwq/bnpc_home.htm

CHRIS CHRISTIE
Governor

KIM GUADAGNO
Lt. Governor

BOB MARTIN
Commissioner

August 18, 2015

Lisa Lemont, CPSWQ
Business Development Manager
Hydro International (Stormwater)
94 Hutchins Drive
Portland, ME 04102

Re: Revised MTD Lab Certification for the Downstream Defender Stormwater Treatment Device
By Hydro International

TSS Removal Rate 50%

Dear Ms. Lemont:

This letter supersedes the previous certification letter dated January 21, 2015. Hydro International requested a new verification for the Downstream Defender Stormwater Treatment Device from the New Jersey Corporation for Advanced Technology (NJCAT) based on enhanced Maximum Treatment Flow Rate (MTFR).

The Stormwater Management rules under N.J.A.C. 7:8-5.5(b) and 5.7(c) allow the use of manufactured treatment devices (MTDs) for compliance with the design and performance standards at N.J.A.C. 7:8-5 if the pollutant removal rates have been verified by the New Jersey Corporation for Advanced Technology (NJCAT) and have been certified by the New Jersey Department of Environmental Protection (NJDEP). Hydro International has requested a Laboratory Certification for the Downstream Defender Stormwater Treatment Device.

The projects falls under the "Procedure for Obtaining Verification of a Stormwater Manufactured Treatment Device from New Jersey Corporation for Advance Technology" dated January 25, 2013. The applicable protocol is the "New Jersey Laboratory Testing Protocol to Assess Total Suspended Solids Removal by a Hydrodynamic Sedimentation Manufactured Treatment Device" dated January 25, 2013.

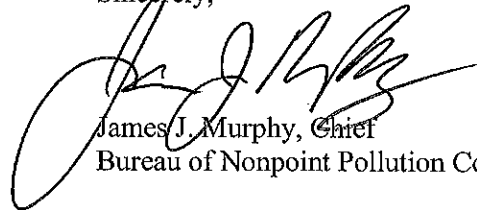
NJCAT verification documents submitted to the NJDEP indicate that the requirements of the aforementioned protocol have been met or exceeded. The NJCAT letter also included a recommended certification TSS removal rate and the required maintenance plan. The NJCAT Verification Report with the Verification Appendix for this device is published online at <http://www.njcat.org/verification-process/technology-verification-database.html>.

The NJDEP certifies the use of the Downstream Defender Stormwater Treatment Device by Hydro International at a TSS removal rate of 50% when designed, operated and maintained in accordance with the information provided in the Verification Appendix.

Be advised a detailed maintenance plan is mandatory for any project with a Stormwater BMP subject to the Stormwater Management Rules, N.J.A.C. 7:8. The plan must include all of the items identified in the Stormwater Management Rules, N.J.A.C. 7:8-5.8. Such items include, but are not limited to, the list of inspection and maintenance equipment and tools, specific corrective and preventative maintenance tasks, indication of problems in the system, and training of maintenance personnel. Additional information can be found in Chapter 8: Maintenance of the New Jersey Stormwater Best Management Practices Manual.

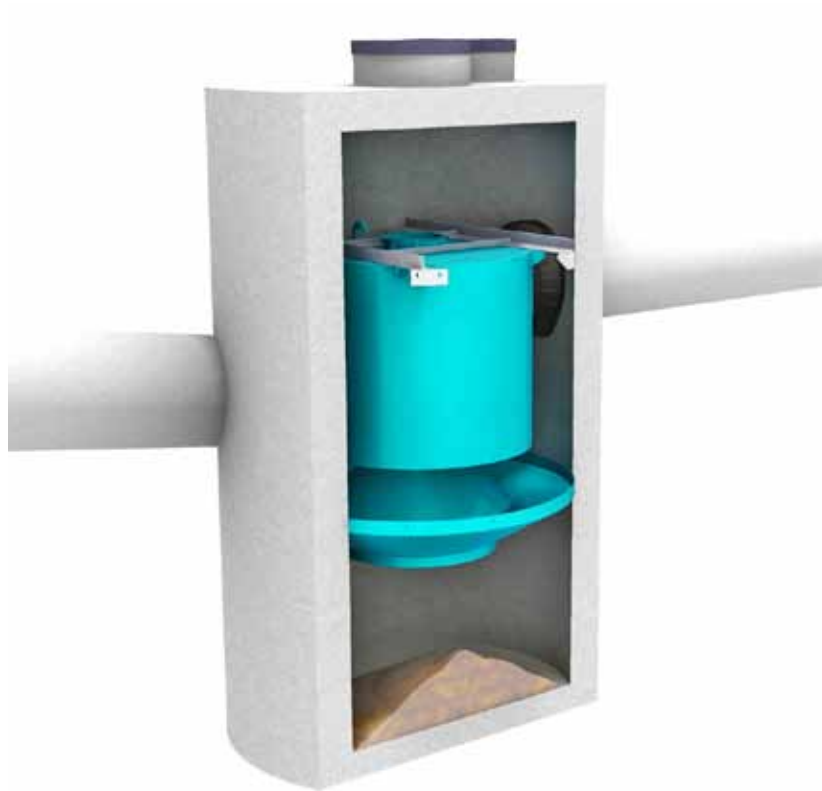
If you have any questions regarding the above information, please contact Mr. Titus Magnanao of my office at (609) 633-7021.

Sincerely,

A handwritten signature in black ink, appearing to read "James J. Murphy". The signature is fluid and cursive, with a large loop at the end.

James J. Murphy, Chief
Bureau of Nonpoint Pollution Control

C: Chron File
Richard Magee, NJCAT
Madhu Guru, DLUR
Ravi Patraju, NJDEP
Titus Magnanao, BNPC



Operation and Maintenance Manual

Downstream Defender[®]

Vortex Separator for Stormwater Treatment

Stormwater Solutions
Turning Water Around ...[®]

Table of Contents

3	Downstream Defender® by Hydro International <ul style="list-style-type: none">- Benefits of the Downstream Defender®- Applications- Downstream Defender® Components
4	Operation <ul style="list-style-type: none">- Introduction- Pollutant Capture and Retention- Wet Sump- Blockage Protection
4	Maintenance <ul style="list-style-type: none">- Overview- Determining Your Maintenance Schedule
5	Maintenance Procedures <ul style="list-style-type: none">- Inspection- Floatables and Sediment Cleanout
8	Downstream Defender® Installation Log
9	Downstream Defender® Inspection Log
10	Downstream Defender® Maintenance Log

COPYRIGHT STATEMENT: The contents of this manual, including the drawings and specifications contained herein or annexed hereto, are intended for the use of the recipient to whom the document and all associated information are directed. Hydro International plc owns the copyright of this document (including any drawings or graphics), which is supplied in confidence. It must not be used for any purpose other than that for which it is supplied and must not be reproduced, in whole or in part stored in a retrieval system or transmitted in any form or by any means without prior permission in writing from Hydro International plc. Downstream Defender® is a trademarked hydrodynamic vortex separation device of Hydro International plc. A patent covering the Downstream Defender® has been granted.

DISCLAIMER: Information and data contained in this manual is exclusively for the purpose of assisting in the operation and maintenance of Hydro International plc's Downstream Defender®. No warranty is given nor can liability be accepted for use of this information for any other purpose. Hydro International plc have a policy of continuous product development and reserve the right to amend specifications without notice.

Downstream Defender® by Hydro International

The Downstream Defender® is an advanced Hydrodynamic Vortex Separator designed to provide high removal efficiencies of settleable solids and their associated pollutants, oil, and floatables over a wide range of flow rates.

The Downstream Defender® has unique, flow-modifying internal components developed from extensive full-scale testing, CFD modeling and over thirty years of hydrodynamic separation experience in wastewater, combined sewer and stormwater applications. These internal components distinguish the Downstream Defender® from simple swirl-type devices and conventional oil/grit separators by minimizing turbulence and headlosses, enhancing separation, and preventing washout of previously stored pollutants.

The high removal efficiencies and inherent low headlosses of the Downstream Defender® allow for a small footprint making it a compact and economical solution for the treatment of non-point source pollution.

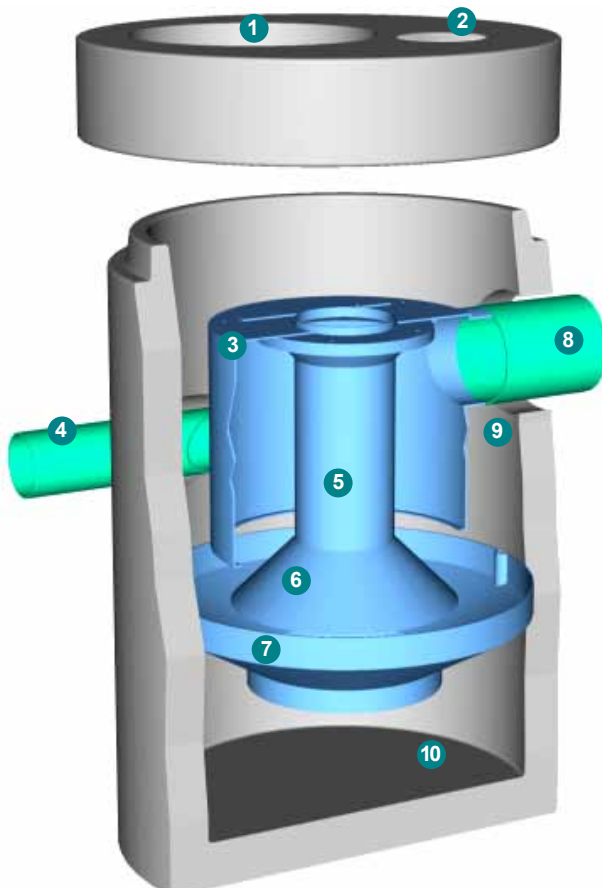
See page 12 for more about Hydro International's Stormwater BMP Maintenance Contractor Certification Program.

Benefits of the Downstream Defender®

- Removes sediment, floatables, oil and grease
- No pollutant washouts
- Small footprint
- No loss of treatment capacity between clean-outs
- Low headloss
- Efficient over a wide range of flows
- Easy to install
- Low maintenance

Applications

- New developments and retrofits
- Utility yards
- Streets and roadways
- Parking lots
- Pre-treatment for filters, infiltration and storage
- Industrial and commercial facilities
- Wetlands protection
- Pretreatment to Low Impact Development practices



Downstream Defender® Components

1. Central Access Port (all models)
2. Floatables Access Port (6-ft/1.8m, 8-ft/2.4m, 10-ft/3.0m and 12-ft/3.7m models only)
3. Dip Plate with Integral Floatables Lid
4. Tangential Inlet
5. Center Shaft
6. Center Cone
7. Benching Skirt
8. Outlet Pipe
9. Floatables Storage Zone
10. Isolated Sediment Storage Zone

Fig. 1 Components of the Downstream Defender®.



Operation

Introduction

The Downstream Defender® operates on simple fluid hydraulics. It is self-activating, has no moving parts, no external power requirement and is manufactured from durable non-corrosive components. No manual procedures are required to operate the unit and maintenance is limited to monitoring accumulations of stored pollutants and periodic clean-outs. The Downstream Defender® has been designed to allow for easy and safe access for inspection/monitoring and clean-out procedures. Entry into the unit or removal of the internal components is not necessary for maintenance, thus safety concerns related to confined-space-entry are avoided.

Pollutant Capture and Retention

The internal components of the Downstream Defender® have been designed to protect the oil/floatables and sediment storage volumes so that separator performance is not reduced as pollutants accumulate between clean-outs (Fig.2). The Downstream Defender® vessel remains wet between storm events. Oil and floatables are stored on the water surface in the outer annulus separate from the sediment storage volume in the sump of the unit providing the option for separate oil disposal, and accessories such as adsorbant pads. Since the oil/floatables and sediment storage volumes are isolated from the active separation region, the potential for re-suspension and washout of stored pollutants between clean-outs is minimized.

Wet Sump

The sump of the Downstream Defender® retains a standing water

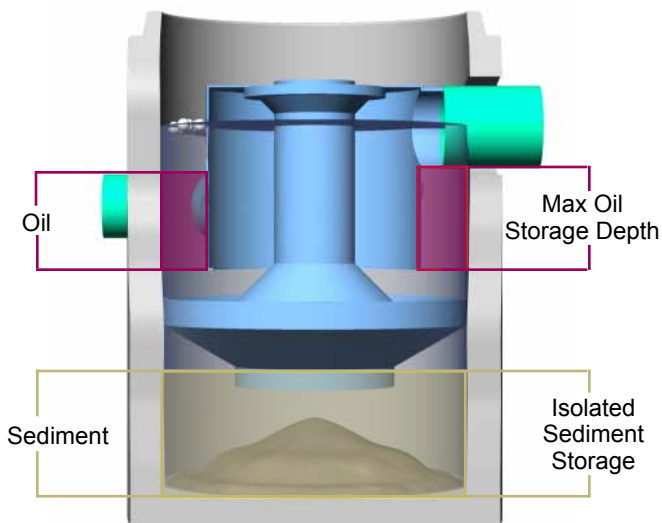


Fig.2 Pollutant storage volumes of the Downstream Defender®.

level between storm events. The water in the sump prevents stored sediment from solidifying in the base of the unit. (The clean-out procedure becomes more difficult and labor intensive if the system allows fine sediment to dry-out and consolidate. Dried sediment must be manually removed by maintenance crews. This is a labor intensive operation in a hazardous environment.)

Blockage Protection

The Downstream Defender® has large clear openings and no internal restrictions or weirs, minimizing the risk of blockage and hydraulic losses. In addition to increasing the system headloss, orifices and internal weirs can increase the risk of blockage within the unit.

Maintenance

Overview

The Downstream Defender® protects the environment by removing a wide range of pollutants from stormwater runoff. Periodic removal of these captured pollutants is essential to the continuous, long-term functioning of the Downstream Defender®. The Downstream Defender® will capture and retain sediment and oil until the sediment and oil storage volumes are full to capacity. When sediment and oil storage capacities are reached, the Downstream Defender® will no longer be able to store removed sediment and oil. Maximum pollutant storage capacities are provided in Table 1.

Hydro International recommends that maintenance crews watch the Downstream Defender® maintenance training video at www.hydro-int.com/us/products/downstream-defender. Maintenance providers are also encouraged to participate in Hydro International's Maintenance Contractor Certification Program (see page 12).



Fig.3 Watch the Downstream Defender® instructional maintenance video at www.hydro-int.com/us/products/downstream-defender.

The Downstream Defender® allows for easy and safe inspection, monitoring and clean-out procedures. A commercially or municipally owned sump-vac is used to remove captured sediment and floatables. Access ports are located in the top of the manhole. On the 6-ft (1.8m), 8-ft (2.4m), 10-ft (3.0m) and 12-ft (3.7m) units, the floatables access port is above the outlet pipe between the concrete manhole wall and the dip plate. The sediment removal access ports for all Downstream Defender® models are located directly over the hollow center shaft.

Maintenance events may include Inspection, Oil & Floatables Removal, and Sediment Removal. Maintenance events do not require entry into the Downstream Defender®, nor do they require the internal components of the Downstream Defender® to be removed. In the case of inspection and floatables removal, a vactor truck is not required. However, a vactor truck is required if the maintenance event is to include oil removal and/or sediment removal.

Determining Your Maintenance Schedule

The frequency of cleanout is determined in the field after installation. During the first year of operation, the unit should be inspected every six months to determine the rate of sediment and floatables accumulation. A simple probe such as a Sludge Judge® can be used to determine the level of accumulated solids stored in the sump. This information can be recorded in the maintenance log (see page 9) to establish a routine maintenance schedule.

The vactor procedure, including both sediment and oil/floatables removal, for a 6-ft (1.8m) Downstream Defender® typically takes less than 30 minutes and removes a combined water/oil volume of about 500 gallons (1900 liters).

Inspection Procedures

Inspection is a simple process that does not involve entry into the Downstream Defender®. Maintenance crews should be familiar with the Downstream Defender® and its components prior to inspection.

Scheduling

- It is important to inspect your Downstream Defender® every six months during the first year of operation to determine your site-specific rate of pollutant accumulation
- Typically, inspection may be conducted during any season of the year
- Sediment removal is not required unless sediment depths exceed 75% of maximum clean-out depths stated in Table 1

Recommended Equipment

- Safety Equipment and Personal Protective Equipment (traffic cones, work gloves, etc.)
- Crow bar or other tool to remove grate or lid
- Pole with skimmer or net
- Sediment probe (such as a Sludge Judge®)
- Trash bag for removed floatables
- Downstream Defender® Maintenance Log

Table 1. Downstream Defender® Pollutant Storage Capacities and Max. Cleanout Depths.

Unit Diameter		Total Oil Storage		Oil Clean-out Depth		Total Sediment Storage		Sediment Clean-out Depth		Max. Liquid Volume Removed	
(ft)	(m)	(gal)	(L)	(in)	(cm)	(yd ³)	(m ³)	(in)	(cm)	(gal)	(L)
4	1.2	70	265	<16	<41	0.70	0.53	<18	<45	384	1,454
6	1.8	216	818	<23	<58	2.10	1.61	<24	<61	1,239	4,690
8	2.4	540	2,044	<33	<84	4.65	3.56	<30	<76	2,884	10,917
10	3.0	1,050	3,975	<42	<107	8.70	6.65	<36	<91	5,546	20,994
12	3.7	1,770	6,700	<49	<125	14.70	11.24	<42	<107	9,460	35,810

NOTES

1. Refer to Downstream Defender® Clean-out Detail (Fig.2) for measurement of depths.
2. Oil accumulation is typically less than sediment, however, removal of oil and sediment during the same service is recommended.
3. Remove floatables first, then remove sediment storage volume.
4. Sediment removal is not required unless sediment depths exceed 75% of maximum clean-out depths stated in Table 1.





Fig. 4



Fig. 5



Fig. 6

Inspection Procedures

1. Set up any necessary safety equipment around the access port or grate of the Downstream Defender® as stipulated by local ordinances. Safety equipment should notify passing pedestrian and road traffic that work is being done.
2. Remove the lids to the manhole (Fig. 4). NOTE: The 4-ft (1.2m) Downstream Defender® will only have one lid.
3. Without entering the vessel, look down into the chamber to inspect the inside. Make note of any irregularities. See Fig. 7 and 8 for typical inspection views.
4. Without entering the vessel, use the pole with the skimmer net to remove floatables and loose debris from the outer annulus of the chamber.
5. Using a sediment probe such as a Sludge Judge®, measure the depth of sediment that has collected in the sump of the vessel (Fig. 5).
6. On the Maintenance Log (see page 9), record the date, unit location, estimated volume of floatables and gross debris removed, and the depth of sediment measured. Also note any apparent irregularities such as damaged components or blockages.



Fig. 7 View over center shaft into sediment storage zone.



Fig. 8 View of outer annulus of floatables and oil collection zone.

7. Securely replace the grate or lid.
8. Take down safety equipment.
9. Notify Hydro International of any irregularities noted during inspection.

Floatables and Sediment Cleanout

Floatables cleanout is typically done in conjunction with sediment removal. A commercially or municipally owned sump-vac is used to remove captured sediment and floatables (Fig. 6).

Floatables and loose debris can also be netted with a skimmer and pole. The access port located at the top of the manhole provides unobstructed access for a vacator hose and skimmer pole to be lowered to the base of the sump.

Scheduling

- Floatables and sump cleanout are typically conducted once a year during any season.
- If sediment depths are greater than 75% of maximum cleanout depths stated in Table 1, sediment removal is required.
- Floatables and sump cleanout should occur as soon as possible following a spill in the contributing drainage area.

Recommended Equipment

- Safety Equipment (traffic cones, etc)
- Crow bar or other tool to remove grate or lid
- Pole with skimmer or net (if only floatables are being removed)
- Sediment probe (such as a Sludge Judge®)
- Vactor truck (6-inch/150mm diameter flexible hose recommended)
- Downstream Defender® Maintenance Log

Floatables and Sediment Clean Out Procedures

1. Set up any necessary safety equipment around the access port or grate of the Downstream Defender® as stipulated by local ordinances. Safety equipment should notify passing pedestrian and road traffic that work is being done.
2. Remove the lids to the manhole NOTE: The 4-ft (1.2m) Downstream Defender® will only have one lid.
3. Without entering the vessel, look down into the chamber to inspect the inside. Make note of any irregularities.
4. Using the Floatables Port for access, remove oil and floatables stored on the surface of the water with the vactor hose or the skimmer net (Fig.9, top).
5. Using a sediment probe such as a Sludge Judge®, measure the depth of sediment that has collected in the sump of the vessel and record it in the Maintenance Log (Pg.9).
6. Once all floatables have been removed, drop the vactor hose to the base of the sump via the Central Access Port. Vactor out the sediment and gross debris off the sump floor (Fig.6 and 9).

7. Retract the vactor hose from the vessel.
8. On the Maintenance Log provided by Hydro International, record the date, unit location, estimated volume of floatables and gross debris removed, and the depth of sediment measured. Also note any apparent irregularities such as damaged components or blockages.
9. Securely replace the grate or lid.

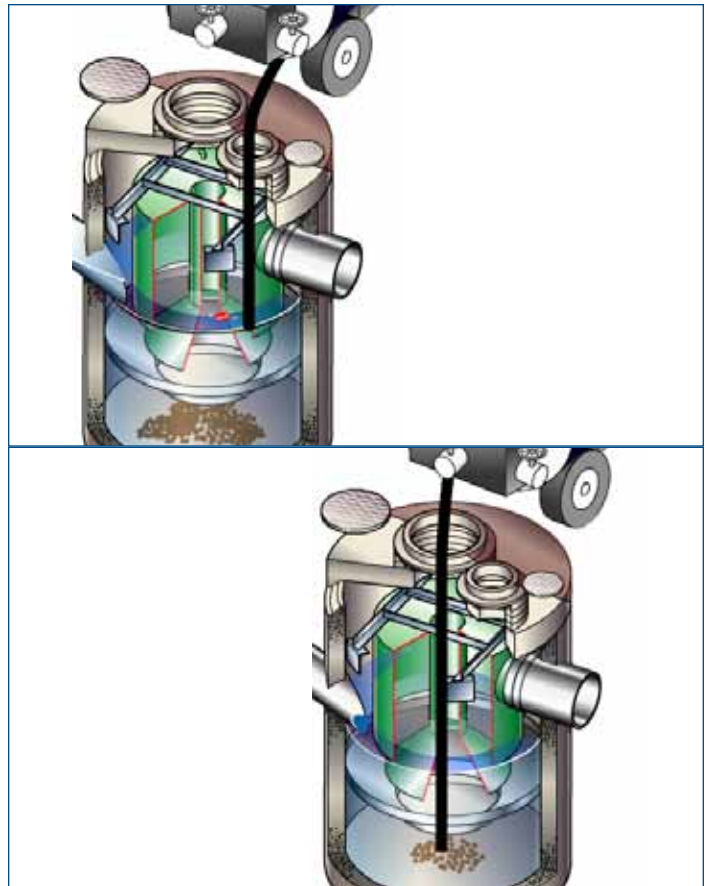


Fig.9 Floatables and sediment are removed with a vactor hose

Maintenance at a Glance

Activity	Frequency
Inspection	- Regularly during first year of installation - Every 6 months after the first year of installation
Oil and Floatables Removal	- Once per year, with sediment removal - Following a spill in the drainage area
Sediment Removal	- Once per year or as needed - Following a spill in the drainage area

NOTE: For most cleanouts it is not necessary to remove the entire volume of liquid in the vessel. Only removing the first few inches of oils/floatables and the sediment storage volume is required.



Downstream Defender® Installation Log

HYDRO INTERNATIONAL REFERENCE NUMBER:	
SITE NAME:	
SITE LOCATION:	
OWNER:	CONTRACTOR:
CONTACT NAME:	CONTACT NAME:
COMPANY NAME:	COMPANY NAME:
ADDRESS:	ADDRESS:
TELEPHONE:	TELEPHONE:
FAX:	FAX:

INSTALLATION DATE: / /

MODEL (CIRCLE ONE): 4-FT 6-FT 8-FT 10-FT 12-FT
 (1.2m) (1.8m) (2.4m) (3m) (3.7m)



Downstream Defender® Maintenance Log

Site Name: _____ Owner Change since last inspection? Y N

Location: _____

Owner Name: _____

Address: _____ Phone Number: _____

Site Status: _____

Date: _____ Time: _____ Site conditions*: _____
**(Stable, Under Construction, Needing Maintenance, etc.)*

Date	Initials	Depth of Floatables and Oils Removed	Sediment Depth Measured Prior to Removal	Site Activity and Comments

*Note: Sediment removal is not required unless sediment depths exceed 75% of maximum clean-out depths stated in Table 1.

Notes





Downstream Defender® Inspection Log

Site Name: _____ Owner Change since last inspection? Y N

Location: _____

Owner Name: _____

Address: _____ Phone Number: _____

Site Status: _____

Date: _____ Time: _____ Site conditions*: _____
 *(Stable, Under Construction, Needing Maintenance, etc.)

Inspection Frequency Key: A=annual; M=monthly; S=after major storms

Inspection Items	Inspection Frequency	Inspected? (Yes/No)	Maintenance Needed? (Yes/No)	Comments/Description
Debris Removal				
Adjacent area free of debris?	M			
Inlets and Outlets free of debris?	M			
Chamber free of debris?	M			
Vegetation				
Surrounding area fully stabilized? (no evidence of eroding material in Downstream Defender®)	A			
Grass mowed?	M			
Water retention where required				
Water holding chamber(s) at normal pool?	M			
Evidence of erosion?	A			
Sediment Deposition				
Sedimentation sump not more than 50% full?	A			
Structural Components				
Any evidence of structural deterioration?	A			
Rim & cover in good condition?	A			
Spalling or cracking of structural parts?	A			
Outlet/Overflow Spillway	A			
Other				
Noticeable odors?	A			
Evidence of flow bypassing facility?	A			

Inspector Comments: _____

Overall Condition of Downstream Defender® : Acceptable Unacceptable
 **"Acceptable" would mean properly functioning; "unacceptable" would mean damaged or required further maintenance.

If any of the above Inspection Items are checked "Yes" for "Maintenance Needed", list Maintenance actions and their completion dates below:

Maintenance Action Needed	Due Date

The next routine inspection is schedule for approximately: (date) _____

Inspected by: (signature) _____

Inspected by: (printed) _____





Hydro International Certification Program

for Stormwater BMP Maintenance Providers

The Hydro International Stormwater BMP Maintenance Certification verifies that a stormwater BMP maintenance provider has been trained on the proper inspection and maintenance procedures for Hydro International's manufactured stormwater treatment products.

Maintenance providers who complete this complimentary web-based program become a Hydro International Preferred Stormwater BMP Maintenance Partner. Become a Hydro International certified Stormwater BMP maintenance provider today.

Learn more at <http://www.hydro-int.com/us/products/service-parts>



Stormwater Solutions

94 Hutchins Drive
Portland, ME 04102

Tel: (207) 756-6200
Fax: (207) 756-6212
stormwaterinquiry@hydro-int.com

www.hydro-int.com

Turning Water Around...®
©Hydro International DD_O+M_D1304